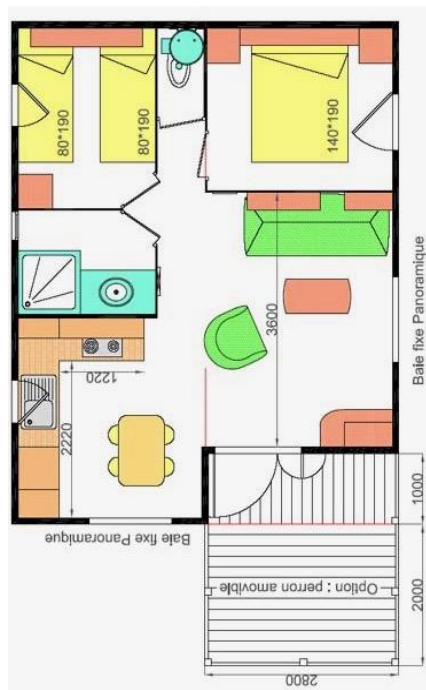


CHALET ALOHA PLUS (renovated : 2024)

♥♥ **EXCEPTIONAL PANORAMIC VIEW over DUNES and SEA** ♥♥

This chalet is not accessible for people with disabilities



- * Interior surface area of 35 M2
- * 1 very large terrace discovered and cover 5M2
- * 1 bedroom with 1 bed: 1,60 * 1,90 equipped with winter duvet, fleece blanket and 2 pillows (bedlinen not included)
- * 1 Bedroom with 2 beds next to next 0,80 * 1,90 equipped with 2 fleece blankets and 2 pillows (bedlinen not included).
- * 1 kitchen, equipped with a gas hob, microwave, fridge-freezer, cookware and crockery.
- * 1 living room: a sofa and 1 armchair and large TV
- * 1 shower, sink and separate WC
- * 1 electric heating in the living room
- * 1 picnic table and 2 relax armchairs

Arrivals are from 3 pm to 8 pm and departures before 10 am

Tourist tax: 0.22 € / Person + 18 years / Night (not included)

HOUSEHOLD PACKAGE: 80 €. The end-of-stay cleaning for accommodation must be returned clean (cleaned, dishes washed, blankets folded and bins emptied). If the accommodation is not returned in a suitable state of cleanliness, the cleaning package will be charged.

Package for 1 dog (10 €/night.) Maximum of 70 € for any stay + 7 nights.

If 2 dogs (20 €/night) Maximum 120 € for stay + 7 nights

LONG-TERM OFFER: ONLY In April, May, June and September :
3 consecutive weeks purchased: -10% 4 consecutive weeks purchased: -20%

April May June September only per week	3 NIGHTS	4 NIGHTS	5 NIGHTS	6/7 NIGHTS
ALOHA PLUS N°12 (4 persons) Exceptional view over dunes et sea	500,00 €	540,00 €	580,00 €	620,00 €
JULY AND AUGUST	28/6...5/7	5/7.....12/7 16/8....23/8	12/7....16/8	23/8....30/8
ALOHA PLUS N°12 (4 persons) Exceptional view over dunes et sea	920,00 €	1040,00 €	1130,00 €	930,00 €

Arrival from 3 pm to 8 pm
Departure : From 8 am to 12 pm
Pitch: 160 M2 à 200 M2
We do not propose insurance.
Our chalets are not accessible to
disabled people

Services offers :

Grocery from 1 July to 31 August
Tuesday, Wednesday, Thursday, Friday

PRICES of services:

Washing-machine : 5.00 €

Dryer : 3.00 €

Wifi free around the office

Pond to fish : free only for customers

Ping-pong table free

Tourist brochures available at the office

For the respect of your environment and your tranquility

We do not propose any animation.

Our philosophy: return to the traditional values of simplicity and
conviviality, essential for those who love the great outdoors



GENERAL TERMS AND CONDITIONS OF SALE

Registration for one of our stays implies acceptance of our general terms and conditions of sale.

ARRIVAL and DEPARTURE

Arrival is between 3pm and 8pm and departure between 8am and 10am. Any delay in arrival must be reported to the campsite by any means.

In July and August, arrivals are by the week from Saturday to Saturday

The reservation is nominative and personal and cannot be transferred or sublet. It is made using the form (reservation contract for a camping chalet) which must be returned to us dated and signed and accompanied by your payment (Cash, Check or bank transfer)

- The reservation will only be effective after receipt of the signed contract and payment of the 25% deposit payable within 15 days of receipt of the contract. Upon receipt of the signed contract and payment of the deposit, a confirmation will be sent to you.
- Any subsequent change in the applicable VAT rate, occurring between the time the rates were determined and the invoicing of the stay, will result in a corresponding change in the price including tax.
- **The balance of the stay must be paid 15 days before arrival**
- No refund or reduction will be granted for any stay shortened by the tenant (either in the case of a delayed arrival or a change in the number of people, or an early departure.
- For security and insurance reasons, the number of occupants cannot exceed the capacity provided for by type of chalet. Otherwise, upon arrival, the campsite reserves the right to refuse access to the accommodation.
- Any change in the number of people or other pricing elements (car, animal, etc.) must be reported upon arrival.
- Minors must be accompanied by their parents for the entire duration of the stay.
- Dogs are accepted for chalet rentals (maximum 2 dogs), but they must not be left alone, locked up in the absence of their owner. They must be kept on a leash and any category dog (1 or 2) will be prohibited in our establishment as well as any animal showing aggression. Vaccination record required.

Our prices include:

- Water, electricity and gas. 1 or 2 vehicles maximum on the site.

Our prices do not include:

- Additional person in the contract, animals, daily visitor, and **tourist tax (0.22 € / person + 18 years / night)**
- End of stay cleaning for accommodation must be returned clean (cleaned, dishes washed, blankets folded and trash cans emptied) If the accommodation is not returned in a suitable state of cleanliness, the cleaning fee will be charged. (80 €).
- A security deposit (deposit) of 250 € (payable by check, cash, credit card imprint) will be collected on arrival and will be returned on the day of the inventory after verification or within 15 days if the departure of the rental is before 8 a.m. After possible deduction of the costs of restoring the rented equipment.

IN CASE OF CANCELLATION BY THE TENANT

Any cancellation must be sent by registered letter or email.

No refund will be granted for a stay shortened by the tenant, whatever the reason. In case of cancellation:

1 / Between 90 and 30 days before the arrival date, the deposit will not be refunded.

2 / Between 30 days and 15 days before the arrival date, the rental price will be due up to 50%.

3 / Between 15 days and the arrival date or if you do not show up on this date, the entire stay will be retained by the campsite

The internal regulations are displayed at the campsite reception. As a customer of the campsite, they are binding on you.

We thank you and wish you a pleasant stay. Nicolas et Marie LECOEUR

